

(8182)63-90-72
 +7(7172)727-132
 (4722)40-23-64
 (4832)59-03-52
 (423)249-28-31
 (844)278-03-48
 (8172)26-41-59
 (473)204-51-73
 (343)384-55-89
 (4932)77-34-06
 (3412)26-03-58
 (843)206-01-48

(4012)72-03-81
 (4842)92-23-67
 (3842)65-04-62
 (8332)68-02-04
 (861)203-40-90
 (391)204-63-61
 (4712)77-13-04
 (4742)52-20-81
 (3519)55-03-13
 (495)268-04-70
 (8152)59-64-93
 (8552)20-53-41

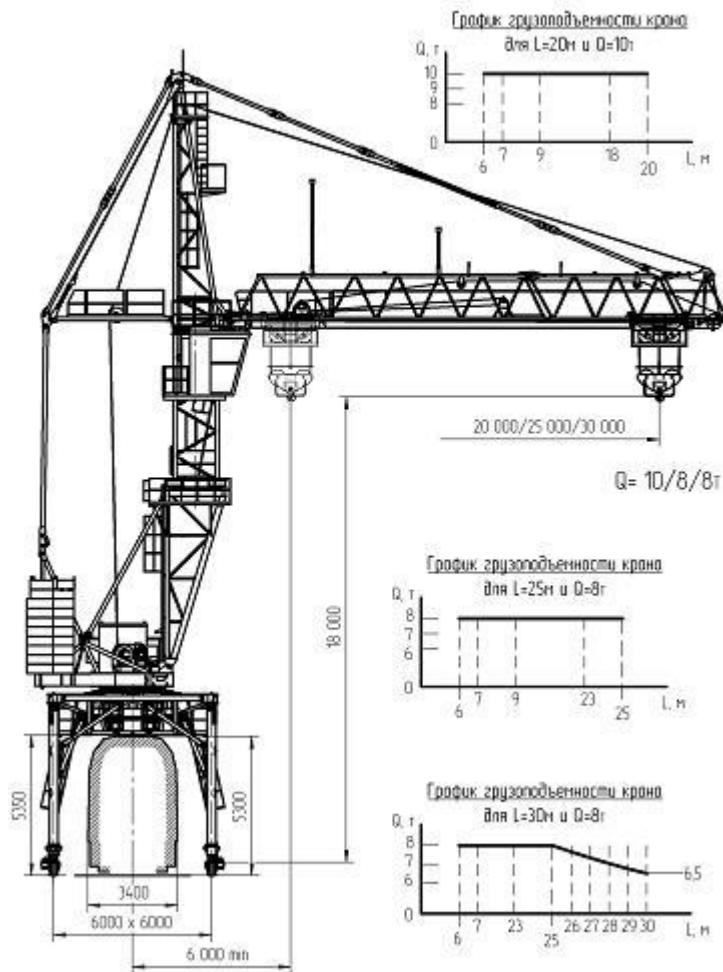
(831)429-08-12
 (3843)20-46-81
 (383)227-86-73
 (4862)44-53-42
 (3532)37-68-04
 (8412)22-31-16
 (342)205-81-47
 - - (863)308-18-15
 (4912)46-61-64
 (846)206-03-16
 - (812)309-46-40
 (845)249-38-78

(4812)29-41-54
 (862)225-72-31
 (8652)20-65-13
 (4822)63-31-35
 (3822)98-41-53
 (4872)74-02-29
 (3452)66-21-18
 (8422)24-23-59
 (347)229-48-12
 (351)202-03-61
 (8202)49-02-64
 (4852)69-52-93

: www.rzhev.nt-rt.ru ||

: rvz@nt-rt.ru

-401 -40 () /
(Qmax=10 ; max=18; Lmax=30)



/			
1	, £	200	
2	Q, -	10,0/8,0/8,0 10,0/8,0/6,5	
3	L (± 8%),	20/25/30 6	
4	(± 8%),	18	
5	, /		
5.1	()	30 (15)	()
5.2	,	4,8 (2,4)	()
5.3	, / ,	30	
5.4	, / ,	20	
5.5	, , /	0,66	
6	,	6,0	
7	,	6,0	
8	,	57	
9	,	112	

:

(8182)63-90-72
+7(7172)727-132
(4722)40-23-64
(4832)59-03-52
(423)249-28-31
(844)278-03-48
(8172)26-41-59
(473)204-51-73
(343)384-55-89
(4932)77-34-06
(3412)26-03-58
(843)206-01-48

(4012)72-03-81
(4842)92-23-67
(3842)65-04-62
(8332)68-02-04
(861)203-40-90
(391)204-63-61
(4712)77-13-04
(4742)52-20-81
(3519)55-03-13
(495)268-04-70
(8152)59-64-93
(8552)20-53-41

(831)429-08-12
(3843)20-46-81
(383)227-86-73
(4862)44-53-42
(3532)37-68-04
(8412)22-31-16
(342)205-81-47
- - (863)308-18-15
(4912)46-61-64
(846)206-03-16
- (812)309-46-40
(845)249-38-78

(4812)29-41-54
(862)225-72-31
(8652)20-65-13
(4822)63-31-35
(3822)98-41-53
(4872)74-02-29
(3452)66-21-18
(8422)24-23-59
(347)229-48-12
(351)202-03-61
(8202)49-02-64
(4852)69-52-93

: www.rzhev.nt-rt.ru ||

: rvz@nt-rt.ru